




Discover[®]
Innovative Battery Solutions



ELIMINATE BATTERY REPLACEMENTS AND EQUIPMENT DOWNTIME WITH AES PROFESSIONAL

HASSLE-FREE REPLACEMENT OF GC-SIZE BATTERIES IN CLASS III WALKIE-PALLET JACKS.

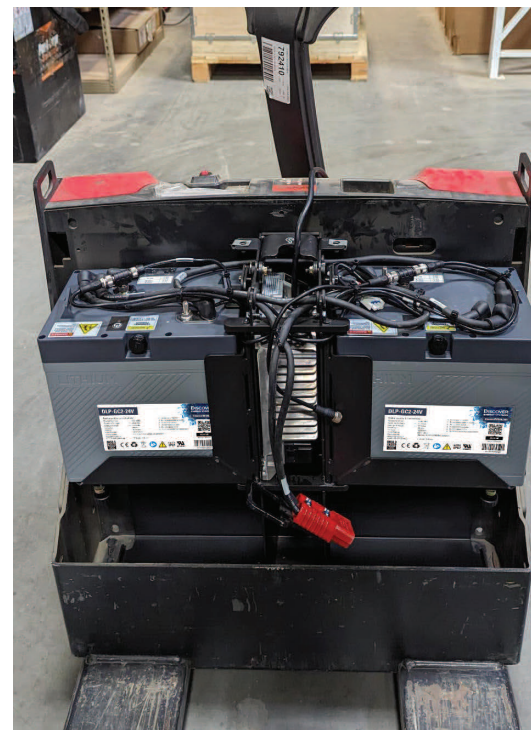
AES PROFESSIONAL batteries increase productivity and lower operational costs in Class III Pallet Jack applications, reducing equipment downtime, maintenance and replacement costs common to lead-acid batteries.

Return on Investment. One **AES PROFESSIONAL** battery can replace four 6V lead-acid batteries and last the life of the equipment. A 5-year warranty and throughput performance guarantee allows you to easily calculate savings from switching to lithium.

Easy Installation. Drop-in replacement of GC2-size batteries and compatible with most OEM on-board chargers. (See diagram for details)

Safety. UL2271 certification delivers industry leading functional safety. The internal Battery Management System (BMS) is designed to deliver safely and protect **AES PROFESSIONAL** from becoming over-discharged.

Efficiency. **AES PROFESSIONAL** batteries charge up to 5x faster and are 20-30% more efficient than lead-acid batteries. Opportunity charge anytime, regardless of the State of Charge.



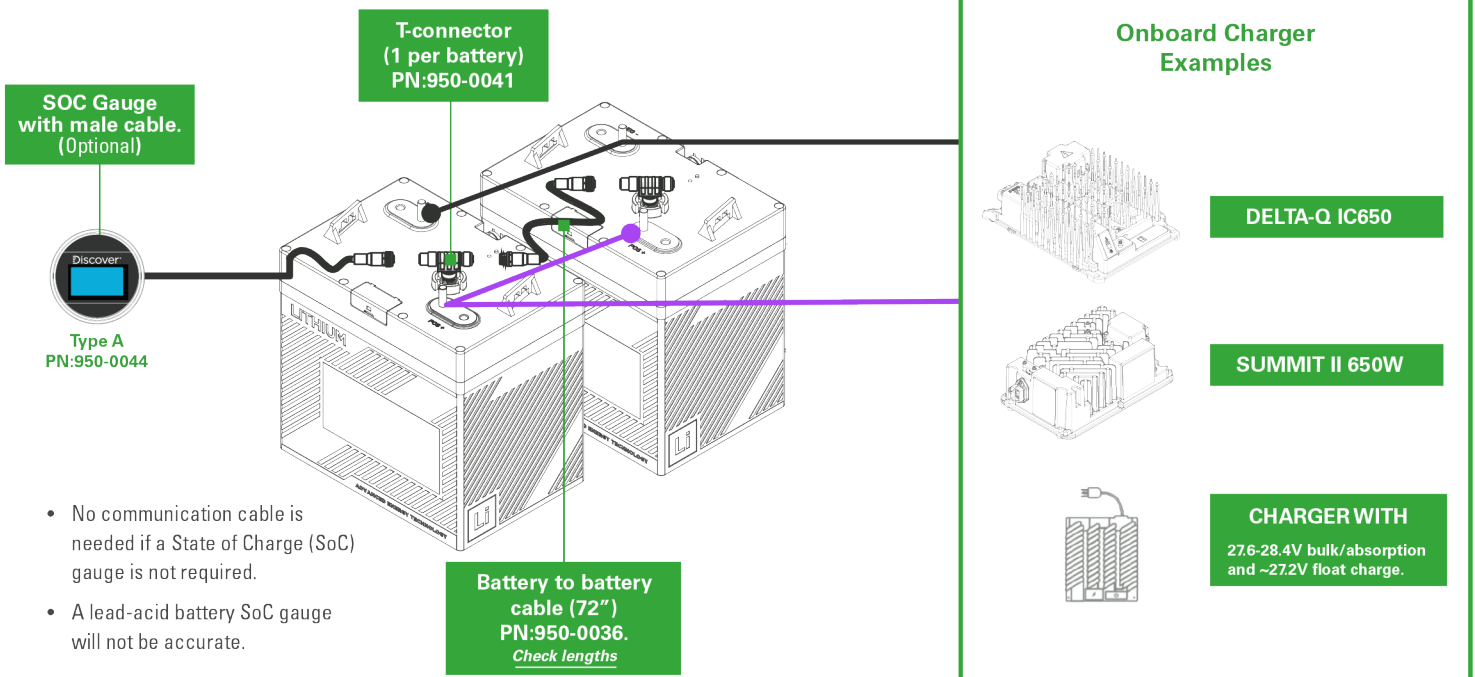
WHY AES PROFESSIONAL?

- **HIGH SURGE CURRENTS.** Power electric lifts and tailgates with a single battery.
- **LIGHTER WEIGHT.** Up to 80% lighter than a comparable lead-acid battery bank. Ship by air.
- **HEATED.** Integrated self-heating for cold storage or reefer truck applications.
- **LONG-TERM STORAGE.** Store powered OFF for extended periods of time.
- **IP67.** Protected against dust and sand, and ideal for wet and humid environments.

BATTERY	SOC GAUGE Only 1 type required (optional)	ACCESSORIES (optional)	
DLP-GC2-24V	BDI Type A or Type B (PN: 950-0044 / PN: 950-0039)	DLP T Connector PN: 950-0041	DLP TOL-1800 PN: 950-0036
1	1	1	-
2	1	2	1
3	1	3	2
4	1	4	3

NOTE. More than 1 battery installations required for heavy load applications or extended runtimes.

CHARGER	ALGORITHM	CHARGE TIME (per battery)
Delta-Q IC650	261	~2 hours
Summit II	BP#22670	~2 hours
Generic Charger with	27.6-28.4V bulk/absorption and ~27.2V float charge.	Depends on power



- No communication cable is needed if a State of Charge (SoC) gauge is not required.
- A lead-acid battery SoC gauge will not be accurate.



#107-10550 42 Street SE Calgary, AB T2C 5C7



+ 1.778.776.3288



info@discoverbattery.com

discoverbattery.com